

Paper Reference(s) 1HI0/10
Pearson Edexcel GCSE (9–1)

History

PAPER 1: Thematic study and historic environment

Option 10: Crime and punishment in Britain, c1000–present

AND Whitechapel, c1870–c1900: crime, policing and the inner city

Wednesday 15 May 2024 – Morning

Time: 1 hour 15 minutes

Sources Booklet

**DO NOT RETURN THIS BOOKLET WITH
THE QUESTION PAPER.**

Sources for use with Section A.

SOURCE A: From an account by Hugh Hoare, printed in the political magazine **National Review**, c1888. Hoare was a wealthy man. In 1886, he took over the running of a lodging house in the Whitechapel area. He wanted to understand the problems of the poor. Here he is commenting on the situation in his lodging house.

At the entrance, there was a little window where the manager sat to collect the four pennies for the night's lodging. He would also sell food to the lodgers.

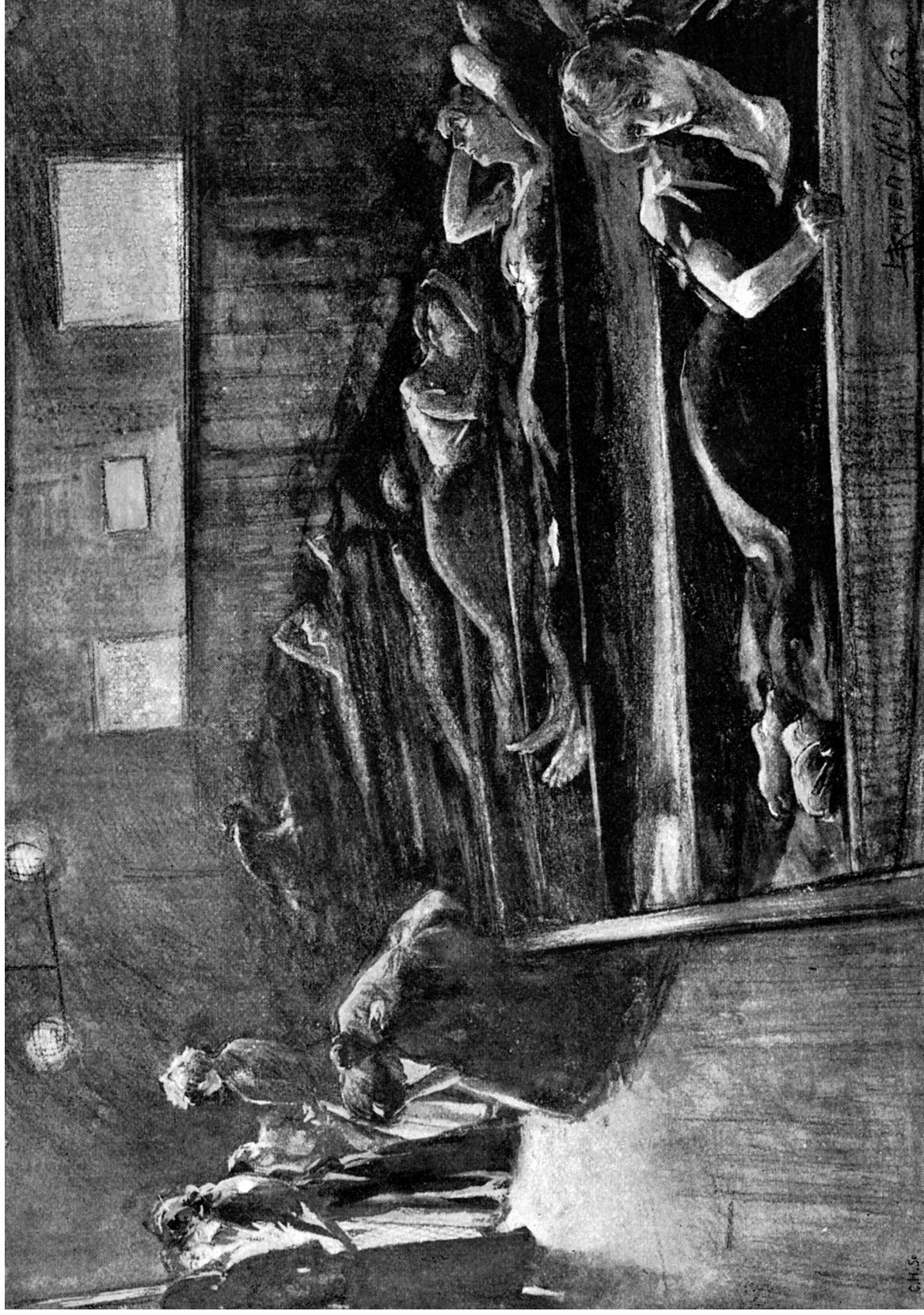
In the kitchen, about twenty men and women were sitting or standing round the fire. The room had long wooden tables and benches. There was also a cupboard with various cups and saucers for the lodgers to use.

The air in my lodging house sometimes smelt remarkably disgusting. There was a long, low room filled with men. Many of them never washed at all.

They never changed their clothes. There was a good deal of smoking, an enormous red-hot fire and all the windows were shut.

Two or three times I was woken up by appalling fights.

SOURCE B: An illustration from **St Paul's Magazine**, published 1895. The magazine was published monthly in London. It contained various stories, articles and illustrations. This illustration shows a women's sleeping area in a lodging house in the Whitechapel area.



Acknowledgements

**Source A taken from: <https://www.casebook.org/dissertations/rip-lodginghouse.html>; Source B taken from:
© Chronicle/Alamy Stock Photo**